

AVAILABLE FOR HIRE AND SALE

Use

Ideal for sites with restricted access or point load weight restrictions, the agile Klaas TC30 trailer crane is the ideal solution. With a maximum height of 30 metres and out reach up to 20 metres, it is very versatile.



Details

Crane model	-	Klaas TC20-30
Lifting capacity	-	1.3 Ton SWL
Max lift height	-	30 metres
Working radius	-	Max 20 metres
Crane weight	-	3.5 Ton
Control	-	Wireless remote
Rigging	-	10 minutes
Power	-	Yanmar diesel engine

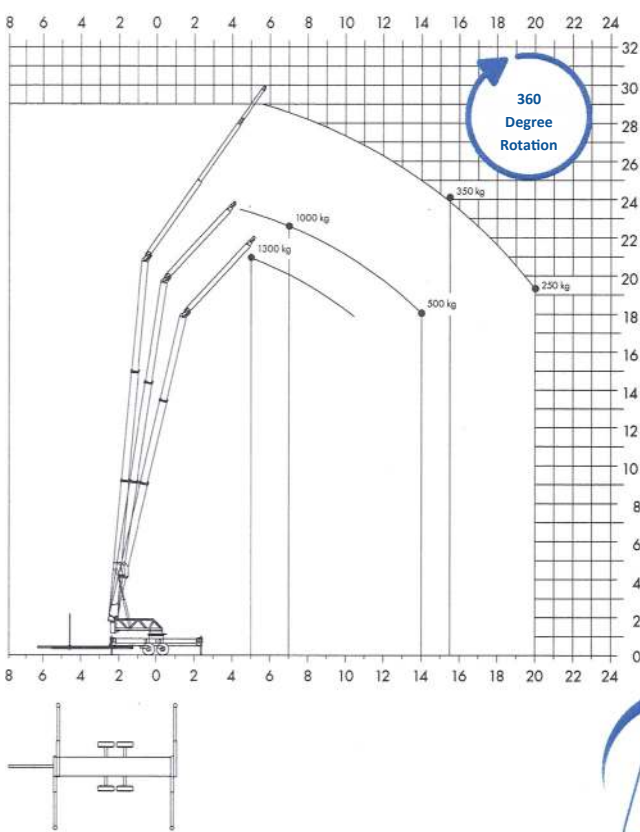


Benefits

- Provides crane lifting capability where a larger mobile crane cannot fit
- Much lower ground bearing pressures, again increasing the places it can be used
- Ideal combination when used with a vacuum lifter for installing glass or cladding
- Ideal for construction sites with restricted access
- Can be used outside of construction in factories, waterways, rail sides, gardens, utilities....
- Diesel or electric options
- Reduction in manual handling by being able to bring cranes to areas previously not possible

PHONE 01299 824 333 FAX 01299 382 200

WEB. www.vacuumandcrane.co.uk E-MAIL. info@vacuumandcrane.co.uk



Radius Data

Weight	Reach	Height
1300KG	5.0m	21.0m
1000KG	7.0m	22.5m
500KG	14.0m	18.0m
350KG	15.5m	24.0m
250KG	20.0m	19.5m

